

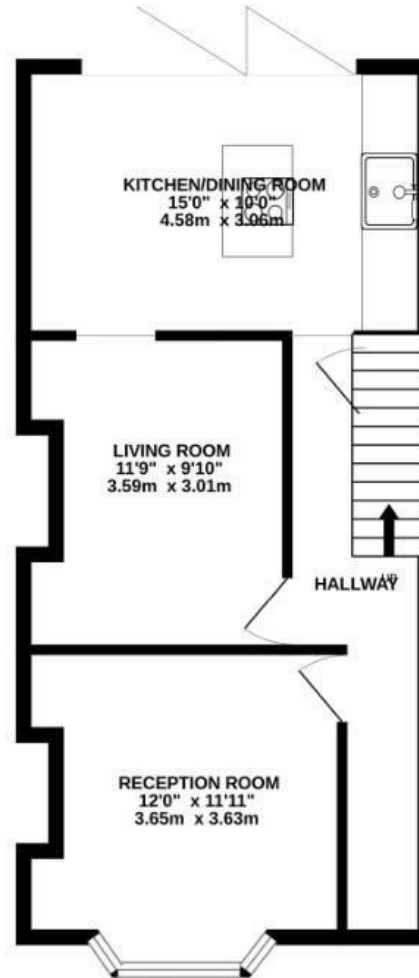
Oakdene Avenue

EASTVILLE

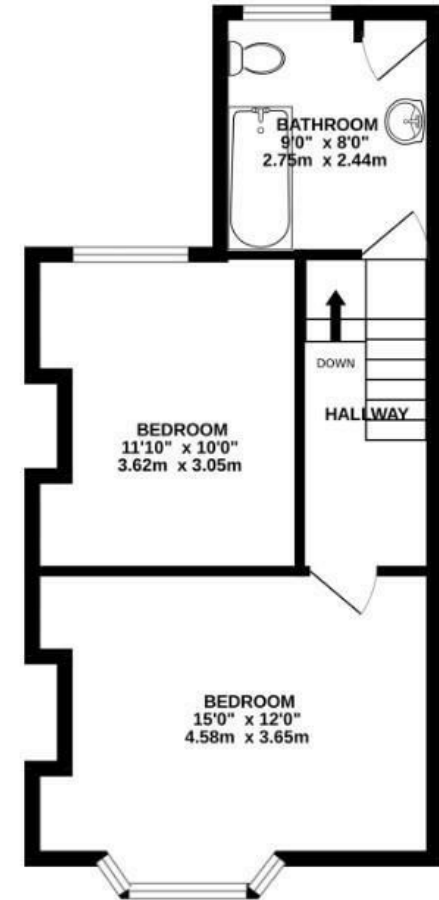
APPROXIMATE FLOOR AREA
83.2 SQM / 895 SQFT



GROUND FLOOR
486 sq.ft. (45.1 sq.m.) approx.



1ST FLOOR
410 sq.ft. (38.1 sq.m.) approx.



Boardwalk

Oakdene Avenue , BRISTOL

£

£415,000



BS5 6QQ

z z z

2 Bedrooms



1 Bathrooms

"We absolutely love the location living here, opposite Eastville Park, river and meadows as well as being central, making it easy to cycle. We've seen the best sunsets from the house and really enjoyed the open plan kitchen/diner with bi-fold doors, making it perfect to host friends. The snug is a cosy sanctuary in the winter evenings. The neighbours are lovely and there's a real sense of community on the street – it's incredibly handy to have a post office and shop at the top of the road too!"

